

# Effects of Different Postures and Ankle Pump Movement on Venous Hemodynamics of Lower Limb

Ruijiao Gao<sup>1\*</sup>, Yanping Wu<sup>2\*</sup>, Xiangdong Liu<sup>1</sup>, Yanrong Zhang<sup>1</sup>, Pengkai Cao<sup>1</sup>, Zenghui Liang<sup>3</sup> and Junqing Ding<sup>4\*</sup>

<sup>1</sup>Department of Vascular Surgery, The Third Hospital of Hebei Medical University, China

<sup>2</sup>Department of Pediatric Ophthalmology, Cangzhou Central Hospital, China

<sup>3</sup>Department of Invasive technology, Cangzhou People's Hospital, China

<sup>4</sup>Department of Nursing, The Third Hospital of Hebei Medical University, China

\*Ruijiao Gao and Yanping Wu contributed equally to this work

**Corresponding author:** Junqing Ding, Department of Nursing, The Third Hospital of Hebei Medical University, China.

**Received Date:** November 11, 2022

**Published Date:** November 29, 2022

## Abstracts

**Purpose:** The aim of this study was to provide evidence of individualized prevention of deep venous thrombosis (DVT) through evaluating venous hemodynamics of lower limb in response to ankle pump movement in different positions.

**Methods:** Peak flow velocity (PSV) and time-averaged mean velocity (TAMV) of femoral vein were measured in 10 health volunteers (20 limbs) using color Doppler ultrasound in different positions, including at rest and when ankle pump movement were performed at lower limb elevation of 0, 15, 30, 45 degrees.

**Results:** In the rest position, the PSV was significantly higher in lower limb elevate 30° (35.36±4.97) than 0° (23.38±2.23), 15° (28.45±3.01) and 45° (25.89±5.51). (P<0.05). The PSV was significantly higher in lower limb elevate 30° (29.14±7.23) than 0° (20.20±2.51), 15° (23.67±4.52) and 45° (20.37±3.39). (P<0.05). In ankle pump movement position, the PSV was higher in lower limb elevate 0° 47.35(41.35~57.18) than 15° 32.05(28.13~39.20), 30° 43.60(36.33~51.23), and 45° 29.80(27.15~36.08). However, there were no significant differences between either group(P>0.05). The TAMV was higher in lower limb elevate 0° 45.50(41.35~55.18) than 15° 31.65(26.70~35.40), 30° 38.35(34.08~49.60) and 45° 24.60(20.53~34.50). However, there were no significant differences between groups (P>0.05).

**Conclusion:** Both ankle pump movement and elevate lower limb may promote return of lower venous. However, the effects of rest and ankle pump movement on deep venous blood flow dynamics of lower limb are different at different position of lower limb elevation.

**Keywords:** Ankle pump movement; Position; Lower extremity; Deep vein; Hemodynamics

## Introduction

Deep venous thrombosis (DVT) is a common complication of trauma, operation and immobility. The incidence of DVT is 80 cases per 100,000, with a prevalence of lower limb DVT of 1case per

1000 population. DVT may cause pulmonary thromboembolism (PTE), even death [1]. The pathophysiological mechanisms of DVT involve damage of the vessel wall, blood flow turbulence

and hypercoagulability. Immobility may reduce blood flow, which allows the accumulation of procoagulant factors that may induce thrombosis. The primary goal of pharmacologic DVT prophylaxis is to prevent fatal PE. There are three protocols for the prevention of DVT, which include basic prevention, physical prevention and drug prevention. Early clinical studies in DVT prevention focused on the potential benefit of prophylactic anticoagulation in populations at high risk of DVT. And anticoagulation is the mainstay of treatment for DVT. It aims to reduce mortality, thrombus extension, recurrence, the risk of post thrombotic syndrome (PTS) and chronic thromboembolic pulmonary hypertension. However, effective anticoagulant also increases the risk of bleeding, and anticoagulant may prevent DVT results in a 50-70% reduction in the rate of DVT [2], there are still about 30-50% patients would suffer DVT. Physical prevention of DVT includes ankle pump exercise and lower limb elevation, which may promote the venous blood return [3].

Physical prevention is one of the measures of prevention recommended by guideline and has been used in clinical application. However, there are few studies focusing on how much lower limb elevation will promote lower limb return is the best. In this study, we measure the flow of the velocity of femoral vein using color Doppler ultrasound in different degrees of lower limb elevation, analysis the effect of elevation of lower limb on blood return. Comparing the velocity of femoral venous blood flow aims to form a suitable plan which provides a theoretical basis for clinical application.

## Materials and Methods

### Participants

In this study, twenty participants were enrolled from May 2019 to September 2019. Among them, there were 10 females, aged from 20-32 years. Both sides of femoral veins were detected.

Exclusion criteria:

1. Deep venous thrombosis
2. Iliac venous compression syndrome
3. Chronic venous insufficiency
4. With heart disease.
5. With a history of vascular disease

**Table 1:** The peak and mean flow of right and left femoral venous blood flow.

Elevation Degree	Peak Systolic Velocity of Right Femoral Venous Blood Flow (X±S)	Peak Systolic Velocity of Left Femoral Venous Blood Flow (X±S)	T	P	Time-Averaged Mean Flow Velocity of Right Femoral Venous Blood Flow (X±S)	Time-Averaged Mean Flow Velocity of Left Femoral Venous Blood Flow (X±S)	T	P
0	23.25±2.24	23.51±2.12	-0.4	0.701	20.20±2.21	20.19±2.90	0.014	0.99
15	29.35±3.80	27.55±1.93	2.09	0.07	24.49±4.75	22.84±4.36	1.81	0.1
30	35.36±5.65	35.35±4.49	0.007	0.99	29.11±7.55	29.16±7.30	-0.035	0.97
45	25.85±6.34	25.92±4.88	-0.05	0.96	20.12±3.28	20.62±3.66	-0.44	0.67

### Effects of lower limb elevation on the velocity of femoral venous blood flow at rest

In the rest position, there were differences in the PSV and TAMV of femoral vein among 0°, 15°, 30° and 45° (P=0.00, P=0.00); The PSV

6. Operational history or trauma of lower limb
7. Coagulation disorders

### Methods

The participant lies on examination bed, the femoral vein was located inside the femoral artery above the bilateral ilioinguinal ligament. Femoral venous blood flow was detected at 1cm upon the saphenous femoral vein valve. Duplex sonographic measurements were made with a PHILIPS CX50, fitted with a 5.0MHz sonar head. The angle between the probe and the femoral vein was kept at 60°. The trapezoidal position was selected for lower limb elevation. The line between the top of the greater trochanter of femur and the lateral malleolus of femur in the same side was taken, and then the horizontal line between the top of the greater trochanter of femur and the bed surface was taken. The angel of the two lines was the angle of lower limb elevation. Quiescent condition: the ankle actively dorsiflexes 20° and then plantarflexes 45°, the frequency was 30-40 times/min. The velocities of femoral venous blood flow were detected at horizontal position, lower limb elevation 15, 30 and 45°(Figure 1A, 1B, 1C and 1D). All detections were operated by same ultrasonologist, each position would detect 3 times. The participant would rest 10min before detection.

### Statistical Analysis

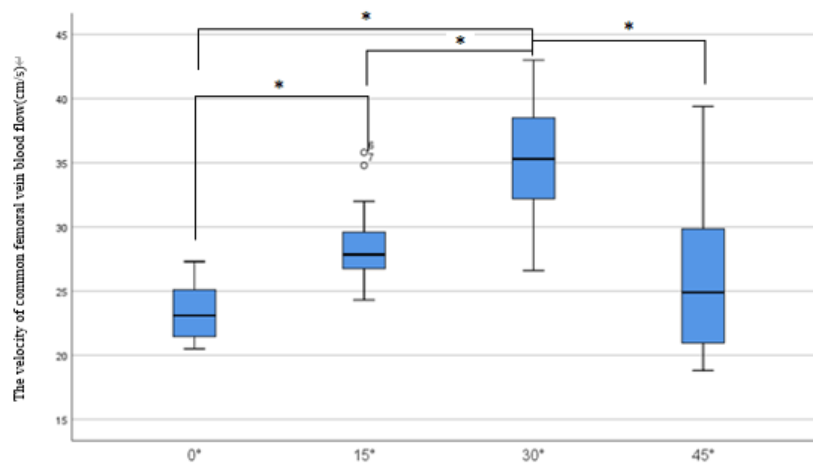
SPSS 22.0 software was used for the statistical analysis. The date presented is regarded as being normal distribution and the results are presented as mean ± SD ( $\bar{x}\pm s$ ). The date presented is regarded as being abnormal distribution and the results are presented as medians and interquartile range. A paired t-test was used to analyze the both side of femoral venous blood flow. The variance analysis of repeated measurement was performed for different groups. Significance was set at P<0.05.

### Results

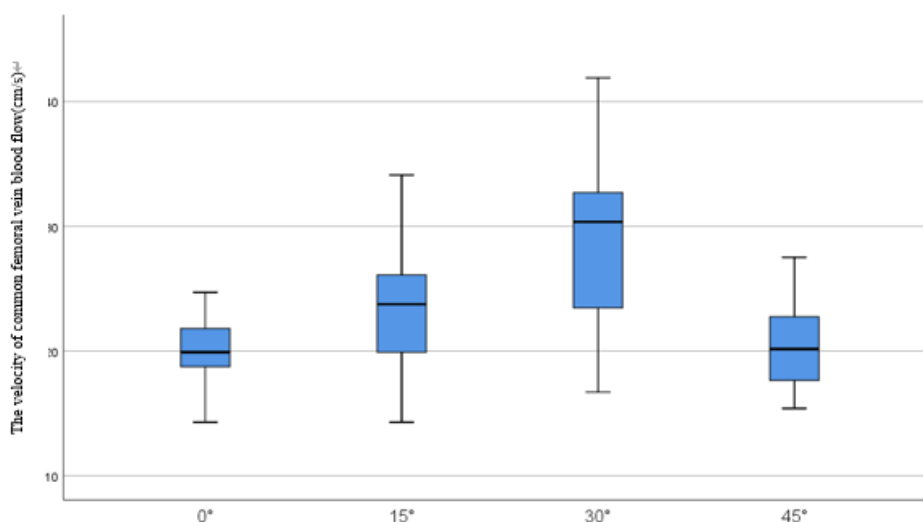
#### The flow velocity of both femoral venous blood flow at rest

In the rest position, there was no difference between right and left femoral venous blood flow velocity at different limb elevation degrees(P>0.05). (Table 1)

of femoral vein was higher in lower limb elevate 30° (35.36±4.97) than 0° (23.38±2.23), 15° (28.45±3.01) and 45° (25.89±5.51). (P<0.05). TAMV of femoral vein was higher in lower limb elevate 30° (29.14±7.23) than 0° (20.20±2.51), 15° (23.67±4.52) and 45° (20.37±3.39). (P<0.05) (Figure 1 and 2).



**Figure 1:** In the rest position, peak systolic velocity of femoral venous blood flow at different levels of lower limb elevation. \*P<0.05.



**Figure 2:** In the rest position, TAMV of femoral vein at different levels of lower limb elevation. There were differences in mean femoral venous blood flow velocity between different lower limb elevations(P<0.05).

### The flow velocity of both femoral venous blood flow at ankle pump movement

**Table 2:** The peak and time-averaged mean flow of right and left femoral venous blood flow.

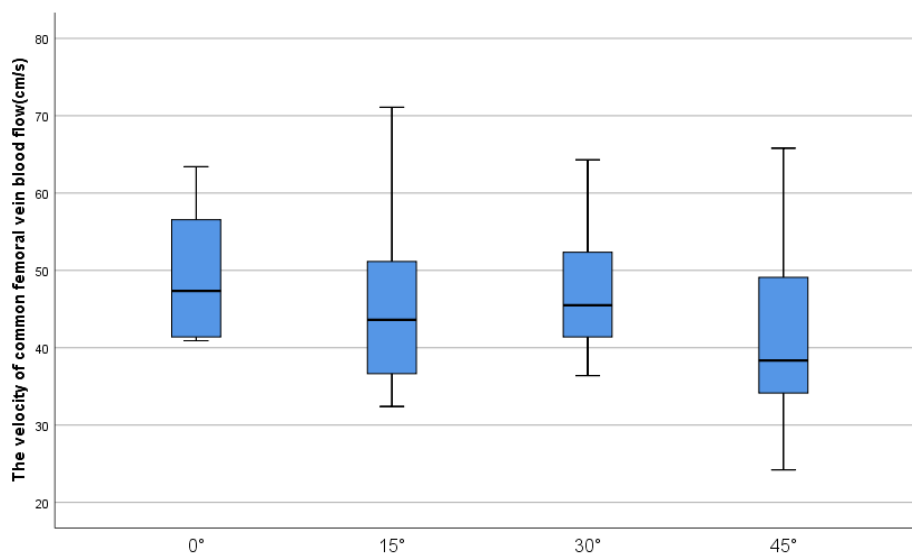
Elevation Degree	Peak Systolic Velocity of Right Femoral Venous Blood Flow M(P25~P45)	Peak Systolic Velocity of Left Femoral Venous Blood Flow M(P25~P45)	T	P	Time-Averaged Mean Flow Velocity of Right Femoral Venous Blood Flow M(P25~P45)	Time-Averaged Mean Flow Velocity of Left Femoral Venous Blood Flow M(P25~P45)	T	P
0	45.20(41.45~58.05)	50.65(41.28~55.95)	-0.627	0.55	31.20(27.73~37.47)	33.00(28.03~47.47)	-1.18	0.27
15	44.20(35.80~52.95)	42.50(36.15~53.45)	-0.07	0.944	28.95(26.48~32.15)	30.90(28.18~41.53)	-1.359	0.21
30	44.70(41.45~50.33)	45.80(40.80~58.33)	-0.186	0.86	28.85(25.50~35.40)	32.30(29.20~37.55)	0.988	0.08
45	41.00(30.08~55.22)	37.20(34.22~46.08)	1.371	0.2	23.75(20.08~41.15)	25.50(20.18~33.50)	0.926	0.38

In ankle pump movement position, there was no difference between right and left femoral venous flow velocity at different limb elevation degrees(P>0.05) (Table 2).

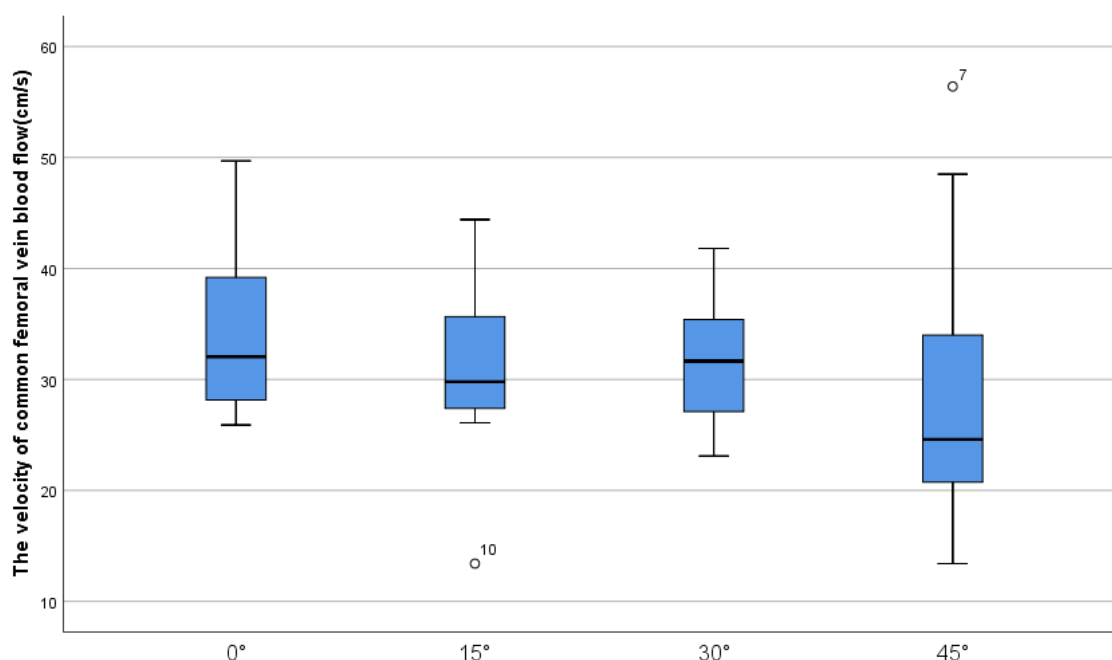
### Effects of lower limb elevation on the velocity of femoral venous blood flow at ankle pump movement

In ankle pump movement position, there were differences in the PSV of femoral vein among 0°, 15°, 30° and 45° ( $P=0.02$ ), however, there were no differences in the TAMV of femoral vein among 0°, 15°, 30° and 45° ( $P=0.10$ ); The PSV of the femoral venous blood flow was higher in lower limb elevate 0° 47.35(41.35~57.18)

than 15° 32.05(28.13~39.20), 30° 43.60(36.33~51.23), and 45° 29.80(27.15~36.08). However, there were no significant differences between groups( $P>0.05$ ). The TAMV of the femoral venous blood flow was higher in lower limb elevate 0° 45.50(41.35~55.18) than 15° 31.65(26.70~35.40), 30° 38.35(34.08~49.60) and 45° 24.60(20.53~34.50). However, there were no significant differences between groups ( $P>0.05$ ) (Figure 3, Figure 4).



**Figure 3:** In ankle pump movement position, the PSV of femoral venous blood flow was higher in lower limb elevate 0° 47.35(41.35~57.18) than 15° 32.05(28.13~39.20), 30° 43.60(36.33~51.23), and 45° 29.80(27.15~36.08). However, there were no significant differences between groups( $P>0.05$ ).



**Figure 4:** In ankle pump movement position, the TAMV of the common femoral vein blood flow was higher in lower limb elevate 0° 45.50(41.35~55.18) than 15° 31.65(26.70~35.40), 30° 38.35(34.08~49.60) and 45° 24.60(20.53~34.50). However, there were no significant differences between groups ( $P>0.05$ ).

## Discussion

Venous stasis is one of the major components of Virchow, s triad [4]. Improving the blood return of lower limb is an effective method to prevent DVT. Both lower limb elevation and ankle pump movement are useful for blood reflow of lower limb [3, 6-8].

In this study, by analyzing the effects of lower limb elevation on the femoral venous blood flow. In the rest position, the femoral venous blood flow with lower limb elevation of 30° had the faster blood flow. The reason may be that: the venous return is affected by negative pressure which produced by diastolic heart and inspiratory movement [9]. In additional, hydrostatic pressure of lower limb vein may also affect the venous return. Elevate lower limb may increase the hydrostatic pressure, which may promote the venous return. However, when the lower limb is raised more than 45°, the peak velocity and mean velocity of femoral venous blood flow were not significantly increased compared with the rest position. The reasons may be related to the following factors: (1). with elevation of lower limb, the curvature of the femoral and popliteal vein increased, which causing to swirl of blood flow. Swirly status will reduce the velocity of blood flow. (2). Popliteal vein may be compressed by knee flexion, which lead to reduction of venous blood flow. Similarly, The return of femoral vein will reduce when the hip is bent [7,10]. In this study, we verified that the peak and mean velocity of femoral vein was the highest at 30° of lower limb elevation in rest position. In ankle pump movement position, the femoral vein velocity was the highest in 0° of lower limb elevation. This result provides scientific basis of the suitable position for venous return in the rest state.

According to our research, we have provided scientific guidance for the prevention of DVT in clinical work for patients with different diseased. For the patients with normal lower limb function, elevate 30° of lower limb, when occurred fatigue or uncomfortable, changed to ankle pump movement at horizontal position, which would be the best scheme for prevention of DVT. For patients with disfunction of lower limb, elevate 30° of lower limb, intermittently lower elevation angle, which may be the best scheme.

## Conclusion

In conclusion, the effects of rest and ankle pump movement on deep venous blood flow dynamics of lower limb are different at

different position of lower limb elevation. Individualized prevention scheme is needed for prevention of DVT on different patients.

## Acknowledgement

None.

## Conflict of Interest

No conflict of interest.

## References

1. Fernandez Capitan C, Rodriguez Cobo A, Jimenez D, Madridano O, Ciammaichella M, et al. (2021) Symptomatic subsegmental versus more central pulmonary embolism: Clinical outcomes during anticoagulation. *Res Pract Thromb Haemost* 5(1): 168-178.
2. Nicholson M, Chan N, Bhagirath V, Ginsberg J (2020) Prevention of Venous Thromboembolism in 2020 and Beyond. *J Clin Med* 9(8).
3. Li Y, Guan XH, Wang R, Li B, Ning B, et al. (2016) Active Ankle Movements Prevent Formation of Lower-Extremity Deep Venous Thrombosis After Orthopedic Surgery. *Med Sci Monit* 22:3169-3176.
4. Kumar DR, Hanlin E, Glurich I, Mazza JJ, Yale SH (2010) Virchow's contribution to the understanding of thrombosis and cellular biology. *Clin Med Res* 8(3-4): 168-172.
5. Stein PD, Yaekoub AY, Ahsan ST, Matta F, Lala MM, et al. (2009) Ankle exercise and venous blood velocity. *Thromb Haemost*, 101(6): 1100-1103.
6. Hickey BA, Cleves A, Alikhan R, Pugh N, Nokes L, et al. (2017) The effect of active toe movement (AToM) on calf pump function and deep vein thrombosis in patients with acute foot and ankle trauma treated with cast - A prospective randomized study. *Foot Ankle Surg* 23(3): 183-188.
7. Kropp AT, Meiss AL, Guthoff AE, Vettorazzi E, Guth S, et al. (2018) The efficacy of forceful ankle and toe exercises to increase venous return: A comprehensive Doppler ultrasound study. *Phlebology* 33(5): 330-337.
8. Lattimer CR, Franceschi C, Kalodiki E (2018) Optimizing calf muscle pump function. *Phlebology* 33(5): 353-360.
9. Li T, Yang S, Hu F, Geng Q, Lu Q, et al. (2020) Effects of ankle pump exercise frequency on venous hemodynamics of the lower limb. *Clin Hemorheol Microcirc* 76(1): 111-120.
10. Kim JT, Park CS, Kim HJ, Lee JM, Kim HS, et al. (2009) The effect of inguinal compression, Valsalva maneuver, and reverse Trendelenburg position on the cross-sectional area of the femoral vein in children. *Anesth Analg* 108(5): 1493-1496.